



SES COLLEGE SREEKANDAPURAM

(Accredited by NAAC with 'B' Grade) Affiliated to Kannur University



FEEDBACK REPORT 2021-22

on academic performance and ambience of the institution
SES College Sreekandapuram

SES COLLEGE SREEKANDAPURAM

FEEDBACK ANALYSIS

A proper understanding of feedback is an integral aspect to ensure the effective implementation of curriculum. SES college prepares a well structured curricular feedback form and is collected regularly from its stakeholders like students, teachers, employers and alumni at various stages through comprehensive questionnaires. An analysis of these feedbacks facilitates us to have a better clarity and awareness in the path of effective achievement of institutional goals and curricular objectives.

TEACHERS FEEDBACK

It is essential to have an understanding of the impact of the curriculum among the various stakeholders, especially teachers, for the successful and effective implementation of the curriculum. To gather the views of the teachers regarding the curricular implementation, annual feedback is collected from all the teachers. The feedback are collected and analyzed and the overall output is used for improving the effectiveness of curricular implementation at the institutional level. An awareness of the teachers feedback enables us to figure out the aspects in curricular implementation which requires modifications. It also helps the teachers to ensure the design of curriculum in an effective manner during their participation at the curricular restructuring process. Teachers' opinion on the following statements are measured in a five-point scale (Excellent 1, Very Good -2, Good-3, Average 4, Poor- 5). 25 Teachers took part in the survey.

| SL.NO | Questions |
|-------|---|
| 1 | The framework of curricular structure |
| 2 | The appropriateness of the sequence of the courses offered in the curriculum |
| 3 | The depth of the syllabus for the course in relation to the competencies expected |
| 4 | Syllabus content for courses in terms of workload on students |
| 5 | Library is equipped with satisfactory materials |
| 6 | Institution provides positive classroom environment |

| | |
|---|---|
| 7 | College provides adequate opportunities and support to faculty members for upgrading their skill and qualifications |
| 8 | The institution enhance the research interests for teachers |

The data collected has been analyzed and the results described below

| SL .N O | Questions | Excellent | Very Good | Good | Ave rag e | Po or | Total |
|---------------|---|-----------|--------------|----------|-----------------|----------|-------|
| 1 | The framework of curricular structure | 7 28% | 9 36% | 9 36% | 0 | | 25 |
| 2 | The appropriateness of the sequence of the courses offered in the curriculum | 6 24% | 11 44% | 7 28% | 1 4% | | 25 |
| 3 | The depth of the syllabus for the course in relation to the competencies expected | 9 36% | 10 40% | 5 20% | 1 4% | | 25 |
| 4 | Syllabus content for courses in terms of workload on students | 8 32% | 8 32% | 8 32% | 0 | 1 | 25 |
| 5 | Library is equipped with satisfactory materials | 9 36% | 10 40% | 2 8% | 4 16% | | 25 |
| 6 | Institution provides positive classroom environment | 8 32% | 10 40% | 7 28% | 0 | | 25 |
| 7 | College provides adequate opportunities and support to faculty members for upgrading their skill and qualifications | 12 48% | 6 24% | 5 20% | 2 8% | | 25 |
| 8 | The institution enhance the research interests for teachers | 9 36% | 9 36% | 3 12% | 3 12% | 1 4% | 25 |

From the data thus collected and analyzed, we come to the following observations. Need to reduce the syllabus of Income tax and separate costing and management accounting. In the

current scenario, time is limited but, in order to complete a semester effectively, a duration of at least 6 months are needed. More facilities should be provided for the students. Seminar halls and smart classrooms are required to improve teaching and learning. More importance should be given on results and enhance the research interests and facilities. Well equipped lab is necessary for a great academic performance.

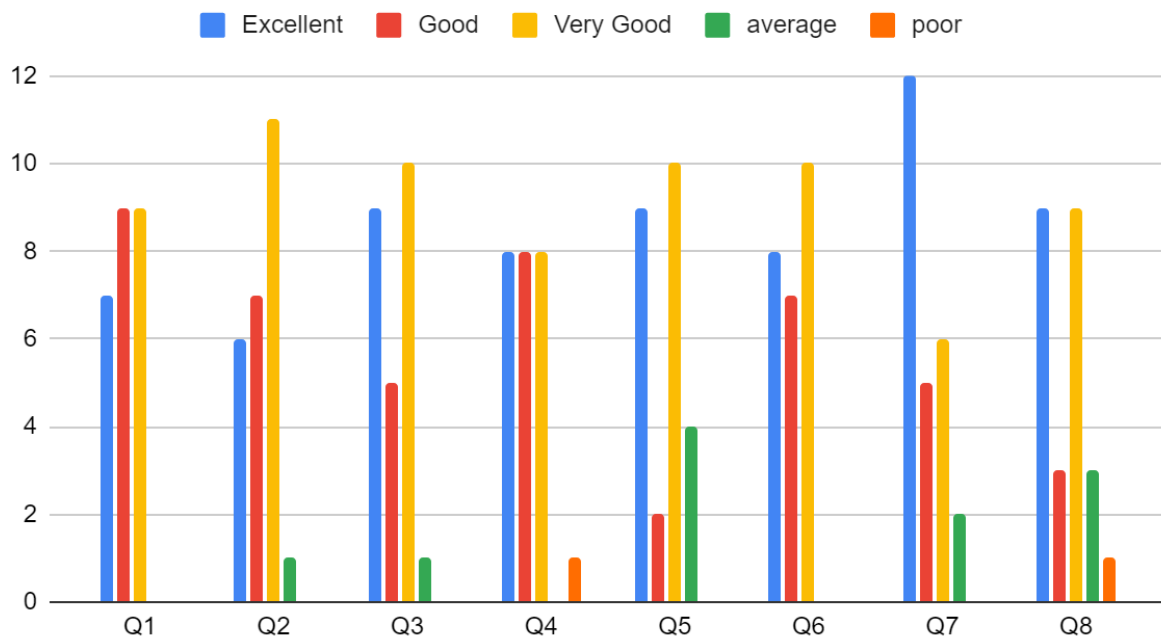
Seminar halls and ground should be provided for extra curricular activities.

Modernize infrastructure and lab facilities, introduction of useful consultancy services and coaching classes, good hostel facilities for girls and boys are essential for the betterment of students

Look of the college should be modernized.

Response Interpretation

Excellent, Good, Very Good, average and poor



ALUMNI FEEDBACK

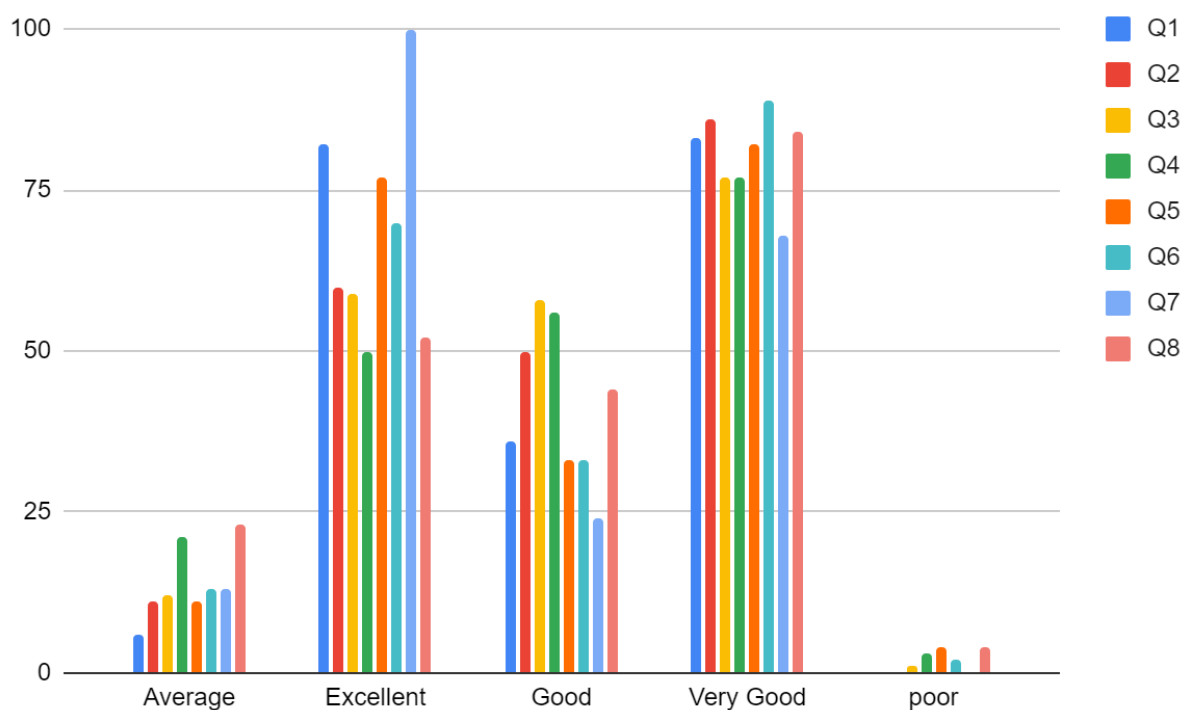
For the successful and effective implementation of the curriculum it is essential to have an understanding of the impact of the curriculum among the various stake holders especially its past students who have a thorough understanding of the college and its policy implementations. To gather the views of the Alumni regarding the curricular implementation, annual feedback is collected from all the Alumni. The feedback are collected and analyzed and the overall output is used for improving the effectiveness of curricular implementation at the institutional level. An awareness of the Alumni feedback enables us to figure out the aspects in curricular implementation at the institutional level which requires modifications. It also helps the teachers to ensure the design of curriculum in an effective manner and the institution for its effective implementation. Alumni's opinion on various questions are measured in five-point scale (Excellent, Very good, Good, average and poor).

| Sl no | Questions |
|-------|--|
| 1 | The adequateness of the courses offered in the program |
| 2 | Relevance of the curriculum in relation to your current professional standards |
| 3 | Skills acquired from the curriculum for practical exposure in life |
| 4 | Relevance of curriculum in providing competence in employability skills & soft skills |
| 5 | The competence and support offered by the institution for the overall development of the students. |
| 6 | Ability of curriculum to support higher learning |

| | |
|---|---|
| 7 | Institution provides motivation for higher education and Life lessons |
| 8 | Institution provides best possible way using ICT and other resources |

A random sample of 207 old students from all the departments of the college was selected. The data collected has been analyzed and the results given below.

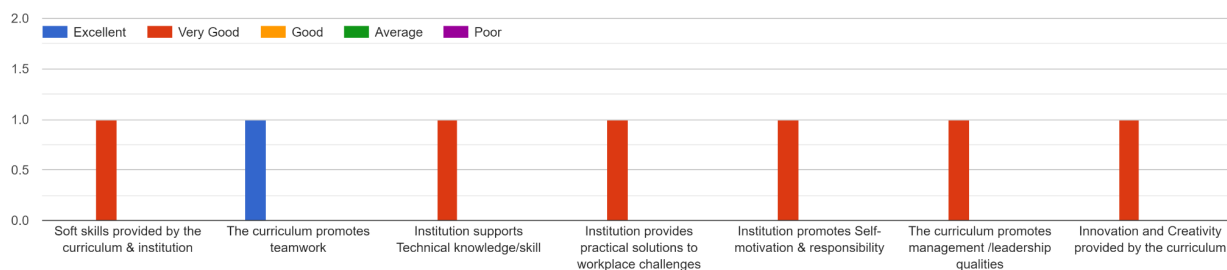
| S L. N O | Questions | Excellent | Very Good | Good | Aver a ge | Poor | Total |
|-------------------|--|-------------|--------------|-----------|-----------------|-----------|-------|
| 1 | The adequateness of the courses offered in the program | 82 39.6% | 83 40% | 36 17% | 6 2.8% | 0 0% | 207 |
| 2 | Relevance of the curriculum in relation to your current professional standards | 60 28.9% | 86 41.5% | 50 24% | 11 5% | 0 0% | 207 |
| 3 | Skills acquired from the curriculum for practical exposure in life | 59 29% | 77 37% | 58 28% | 12 6% | 1 0.4% | 207 |
| 4 | Relevance of curriculum in providing competence in employability skills & soft skills | 50 24% | 77 37% | 56 27% | 21 10% | 3 1.4% | 207 |
| 5 | The competence and support offered by the institution for the overall development of the students. | 77 37% | 82 40% | 33 16% | 11 5% | 4 2% | 207 |
| 6 | Ability of curriculum to support higher learning | 70 36% | 89 43% | 33 16% | 13 6% | 2 0.9% | 207 |
| 7 | Institution provides motivation for higher education and Life lessons | 100 48% | 68 33% | 24 12% | 13 6% | 2 0.9% | 207 |
| 8 | Institution provides best possible way using ICT and other resources | 52 25% | 84 40% | 44 21% | 23 11% | 4 2% | 207 |



Employer's Feedback

| Sl no | Questions |
|-------|--|
| 1 | Soft skills provided by the curriculum & institution |
| 2 | The curriculum promotes teamwork |
| 3 | Institution supports Technical knowledge/skill |
| 4 | Institution provides practical solutions to workplace challenges |
| 5 | Institution promotes Self-motivation & responsibility |
| 6 | The curriculum promotes management /leadership qualities |

Rate the following statements in 5 point scale



STUDENT'S FEEDBACK

Together the views of the students regarding the curricular inculcation and its effective implementation, annual feedback is collected from all the students. The feedback thus containing the observations, anxieties, suggestions etc are collected and analyzed and the overall output is used for improving the effectiveness of curricular implementation at the institutional level. An awareness of the students feedback enables us to figure out the aspects in curricular implementation which requires modifications. It also helps the teachers to ensure the design of curriculum in an effective manner during their participation at the curricular restructuring process. The questionnaire used for student's feedback consists of the following questions.

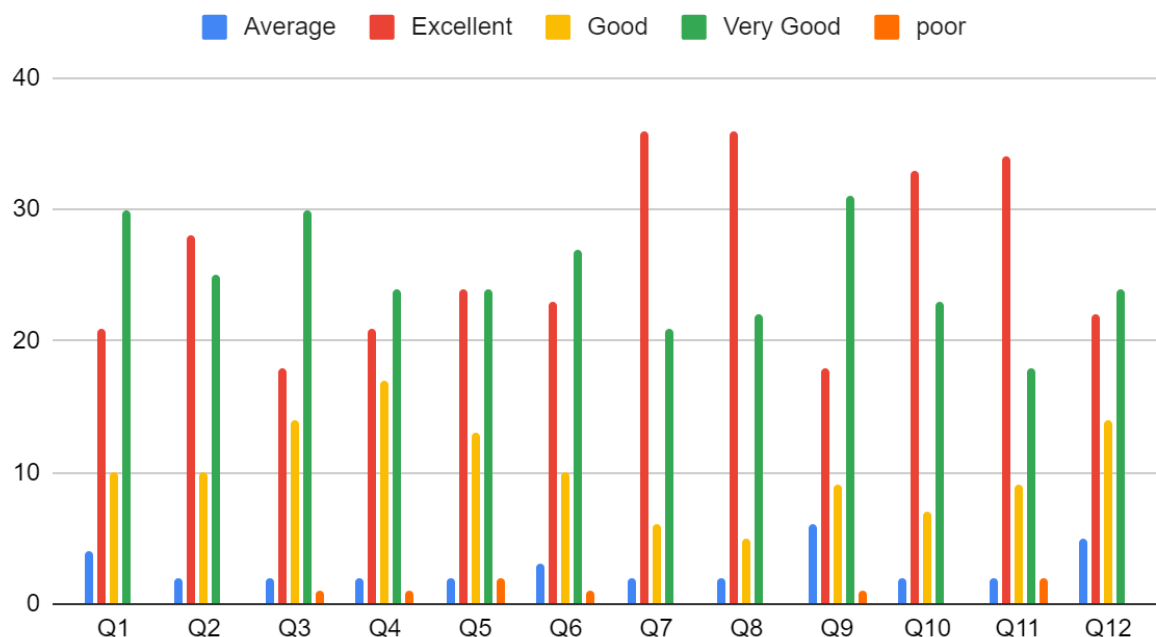
| Sl. No | Questions |
|---------------|--|
| 1 | The curriculum enhances the competencies of the students |
| 2 | Syllabus and teaching methods |
| 3 | The choice of electives (open) provide for employability skills & soft skills. |
| 4 | Relevance and Appropriateness of the units prescribed in the curriculum |
| 5 | Regular updation of Syllabus to meet the demand of the students |
| 6 | Institutional implementation of the curriculum (as per scheduled University Academic Calendar) |
| 7 | Institution provides adequate lab and library facility |
| 8 | Availability of Teachers for student consultation |
| 9 | Institution provides ample time for co-curricular experiences |
| 10 | Conduct of tests and Internal exam for effective learning |
| 11 | Institution provides motivation for higher education and Life lessons |
| 12 | Institution provides best possible way using ICT and other resources |

FEEDBACK REPORT (2021-2022) BBA

| SL. NO | Questions | Excellent | Very Good | Good | Average | Poor | Total |
|--------|--|-----------|-----------|-----------|---------|---------|-------|
| 1 | The curriculum enhances the competencies of the students | 21 32% | 30 46% | 10 15% | 4 6% | 0 | 65 |
| 2 | Syllabus and teaching methods | 28 43% | 25 38% | 10 15% | 2 3% | 0 | 65 |
| 3 | The choice of electives (open) provides for employability skills& soft skills. | 18 28% | 30 46% | 14 22% | 2 3% | 1 2% | 65 |
| 4 | Relevance and Appropriateness of the units prescribed in the curriculum | 21 32% | 24 37% | 17 26% | 2 3% | 1 2% | 65 |
| 5 | Regular updation of Syllabus to meet the demand of the students | 24 37% | 24 37% | 13 20% | 2 3% | 2 3% | 65 |
| 6 | Institutional implementation of the curriculum (as per scheduled University Academic Calendar) | 23 35% | 27 42% | 10 15% | 3 5% | 2 3% | 65 |
| 7 | Institution provides adequate lab and library facility | 36 55% | 21 32% | 6 9% | 2 3% | 0 | 65 |

| | | | | | | | |
|----|--|-----------|-----------|-----------|---------|---------|----|
| 8 | Availability of Teachers for student consultation | 36 55% | 22 34% | 5 8% | 2 3% | 0 | 65 |
| 9 | Institution provides ample time for co-curricular experiences | 18 28% | 31 48% | 9 14% | 6 9% | 1 2% | 65 |
| 10 | Conduct of tests and Internal exam for effective learning | 33 50% | 23 35% | 7 11% | 2 3% | 0 | 65 |
| 11 | Institution provides motivation for higher education and Life lessons | 34 52% | 18 28% | 9 14% | 2 3% | 2 3% | 65 |
| 12 | Institution provides best possible way using ICT and other resources | 22 34% | 24 37% | 14 22% | 5 8% | 0 | 65 |

Average, Excellent, Good, Very Good and poor



Some methods can be implemented for the mental stress relief of students. Interactive sessions between the principal and students can be held weekly or monthly. Institution must provide informations regarding higher education opportunities. From my side, the teachers want to give some notes for reference other wise we cannot relate the lessons.

FEEDBACK REPORT (2021-2022) CHEMISTRY

Annual feedback was collected from all students to gather the views of students regarding the curricular inculcation and its effective implementation. The feedback containing the observations, anxieties, suggestions etc. are collected and analysed and the overall output is used for improving the effectiveness of curricular implementation at the institutional level. From the students' feedback we can make necessary modifications in curricular implementation.

Curriculum Evaluation by Students

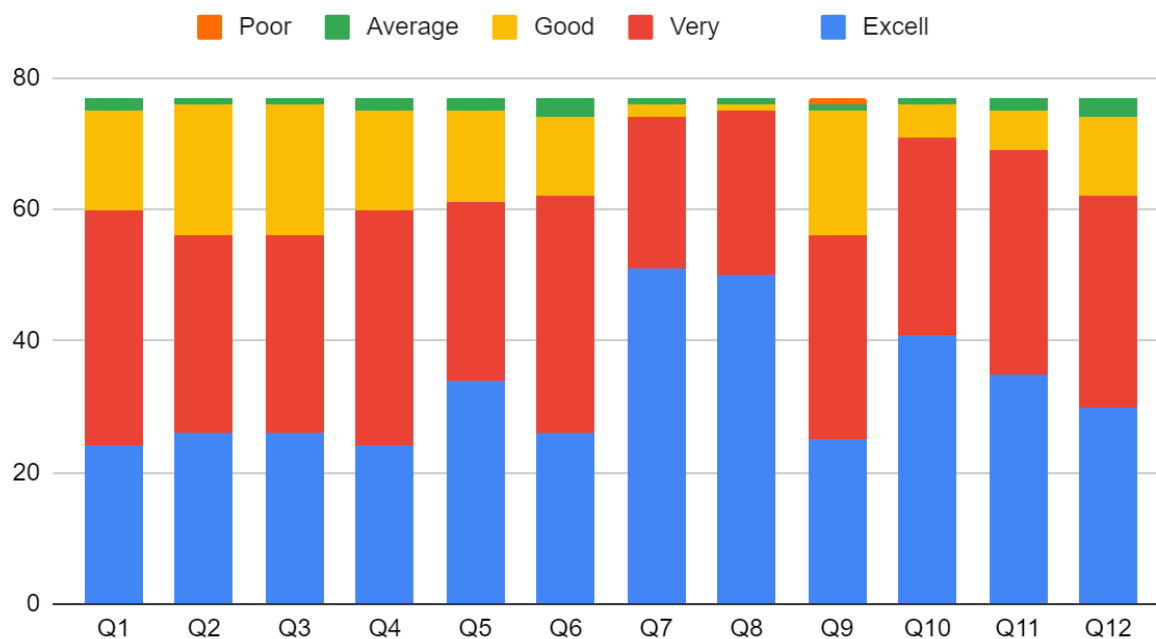
| Sl. no | Questions | | Excell ent | Very Good | Good | Averag e | Poor | Total |
|--------|---|---|---------------|--------------|-------|-------------|------|-------|
| Q1 | The curriculum enhances competencies of the students. | N | 24 | 36 | 15 | 2 | 0 | 77 |
| | | % | 31.17 | 46.75 | 19.48 | 2.59 | 0 | |

| | | | | | | | | |
|----|--|---|-------|-------|-------|------|---|----|
| Q2 | Rate the syllabus and teaching methods | N | 34 | 27 | 15 | 1 | 0 | 77 |
| | | % | 44.16 | 35.06 | 19.48 | 1.29 | 0 | |
| Q3 | The choice of electives (open) provides for employability skills& soft skills. | N | 26 | 30 | 20 | 01 | 0 | 77 |
| | | % | 33.76 | 38.96 | 25.97 | 1.29 | | |
| Q4 | Relevance and Appropriateness of the units prescribed in the curriculum | N | 24 | 36 | 15 | 2 | 0 | 77 |
| | | % | 31.17 | 46.75 | 19.48 | 2.59 | 0 | |
| | Regular updation of Syllabus to | N | 34 | 27 | 14 | 2 | 0 | 77 |

| | | | | | | | | |
|-----|--|---|-------|-------|-------|------|------|----|
| Q5 | meet the demand of the students | % | 44.15 | 35.06 | 18.18 | 2.59 | | |
| Q6 | Institutional implementation of the curriculum (as per scheduled University Academic Calendar) | N | 26 | 36 | 12 | 3 | 0 | 77 |
| | | % | 33.77 | 46.75 | 15.58 | 3.89 | 0 | |
| Q7 | Institution provides adequate lab and library facility | N | 51 | 23 | 2 | 1 | 0 | 77 |
| | | % | 66.23 | 29.87 | 2.59 | 1.29 | 0 | |
| Q8 | Availability of Teachers for student consultation | | 50 | 25 | 1 | 1 | 0 | 77 |
| Q9 | Institution provides ample time for co-curricular experiences | N | 25 | 31 | 19 | 1 | 1 | 77 |
| | | % | 32.47 | 40.26 | 24.67 | 1.29 | 1.29 | |
| Q10 | Conduct of tests and Internal exam for effective learning] | N | 41 | 30 | 5 | 1 | 0 | 77 |
| | | % | 53.25 | 38.96 | 6.49 | 1.29 | 0 | |
| Q11 | Institution provides motivation for | N | 35 | 34 | 6 | 2 | 0 | 77 |

| | | | | | | | | |
|------------|---|----------|--------------|--------------|--------------|-------------|----------|-----------|
| | higher education and Life lessons] | % | 45.45 | 44.15 | 7.79 | 2.59 | | |
| Q12 | Institution provides best possible way using ICT and other resources | N | 30 | 32 | 12 | 3 | 0 | 77 |
| | | % | 38.96 | 41.56 | 15.58 | 3.89 | | |

BSc Chemistry

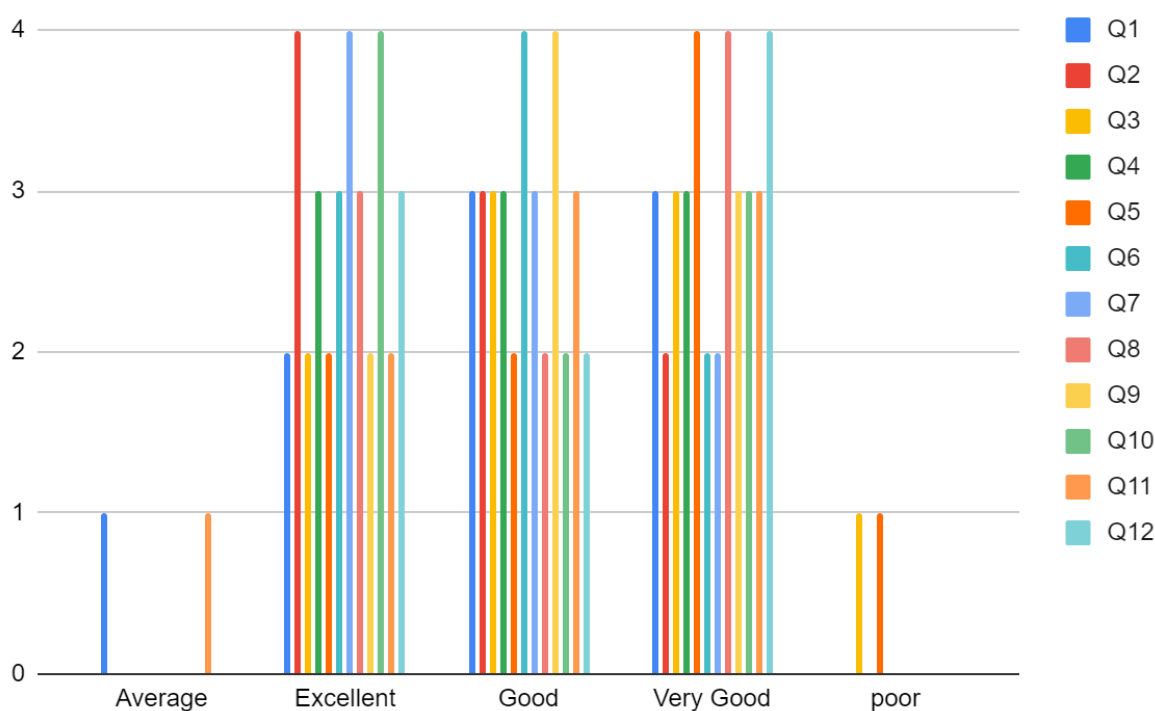


Students Suggestions & Observations to improve the overall quality of the curriculum

Inference: Students are satisfied to a great extent with the curriculum but students suggested certain modifications. By successful implementation of curriculum it is possible to improve the academic atmosphere of the college.

As per the collected responses of the year 2021-22 students suggested to make learning more entertaining. They suggested to improve infrastructure facilities of college also provide more equipments in the laboratory.

FEEDBACK REPORT (2021-2022) MCJ



FEEDBACK REPORT (2021-2022) BCOM

Annual feedback was collected from all students to evaluate the regarding academic outcome of the curriculum, inculcation and its effective implementation. The feedback containing the observations, anxieties, suggestions etc. are collected and analysed and the overall output is used for improving the effectiveness of curricular implementation at the institutional level. From the students' feedback we can make necessary modifications in curricular implementation

Curriculum Evaluation by Students

| Sl. no | Questions | | Excell ent | Very Good | Good | Averag e | Poor | Total |
|--------|---|---|---------------|--------------|-------|-------------|------|-------|
| Q1 | The curriculum enhances competencies of the students. | N | 24 | 36 | 15 | 2 | 0 | 77 |
| | | % | 31.17 | 46.75 | 19.48 | 2.59 | 0 | |

| | | | | | | | | |
|----|--|---|-------|-------|-------|------|---|----|
| | | % | 44.16 | 35.06 | 19.48 | 1.29 | 0 | 77 |
| Q3 | The choice of electives (open) provides for employability skills& soft skills. | N | 26 | 30 | 20 | 01 | 0 | 77 |
| | | % | 33.76 | 38.96 | 25.97 | 1.29 | | |
| Q4 | Relevance and Appropriateness of the units prescribed in the curriculum | N | 24 | 36 | 15 | 2 | 0 | 77 |
| | | % | 31.17 | 46.75 | 19.48 | 2.59 | 0 | |
| | Regular updation of Syllabus to | N | 34 | 27 | 14 | 2 | 0 | 77 |

| | | | | | | | | |
|------------|---|----------|--------------|--------------|--------------|-------------|-------------|-----------|
| Q5 | meet the demand of the students | % | 44.15 | 35.06 | 18.18 | 2.59 | | |
| Q6 | Institutional implementation of the curriculum (as per scheduled University Academic Calendar) | N | 26 | 36 | 12 | 3 | 0 | 77 |
| | | % | 33.77 | 46.75 | 15.58 | 3.89 | 0 | |
| Q7 | Institution provides adequate lab and library facility | N | 51 | 23 | 2 | 1 | 0 | 77 |
| | | % | 66.23 | 29.87 | 2.59 | 1.29 | 0 | |
| Q8 | Availability of Teachers for student consultation | | 50 | 25 | 1 | 1 | 0 | 77 |
| Q9 | Institution provides ample time for co-curricular experiences | N | 25 | 31 | 19 | 1 | 1 | 77 |
| | | % | 32.47 | 40.26 | 24.67 | 1.29 | 1.29 | |
| Q10 | Conduct of tests and Internal exam for effective learning] | N | 41 | 30 | 5 | 1 | 0 | 77 |
| | | % | 53.25 | 38.96 | 6.49 | 1.29 | 0 | |
| Q11 | Institution provides motivation for | N | 35 | 34 | 6 | 2 | 0 | 77 |

| | | | | | | | | |
|-----|--|---|-------|-------|-------|------|---|----|
| | higher education and Life lessons] | % | 45.45 | 44.15 | 7.79 | 2.59 | | |
| Q12 | Institution provides best possible way using ICT and other resources | N | 30 | 32 | 12 | 3 | 0 | 77 |
| | | % | 38.96 | 41.56 | 15.58 | 3.89 | | |

FEEDBACK REPORT (2021-2022) PHYSICS

Feedback was collected from all students to understand the views of students in the present year. The feedback containing the observations, anxieties, suggestions etc. are collected and analysed and the overall output is used for improving the effectiveness of curricular implementation at the institutional level. From the students' feedback we can make necessary modifications in curricular implementation.

Curriculum Evaluation by Students

| Sl. no | Questions | | Excellent | Very Good | Good | Average | Poor | Total |
|--------|---|---|-----------|-----------|-------|---------|------|-------|
| Q1 | The curriculum enhances competencies of the students. | N | 13 | 16 | 6 | 3 | 0 | 38 |
| | | % | 34.21 | 42.10 | 15.78 | 7.89 | 0 | |

| | | | | | | | | |
|----|--|---|-------|-------|-------|------|------|----|
| Q2 | Rate the syllabus and teaching methods | N | 11 | 17 | 8 | 2 | 0 | 38 |
| | | % | 28.94 | 44.73 | 21.05 | 5.26 | 0 | |
| Q3 | The choice of electives (open) provides for employability skills& soft skills. | N | 8 | 18 | 8 | 3 | 0 | 37 |
| | | % | 21.62 | 48.64 | 21.62 | 8.10 | 0 | |
| Q4 | Relevance and Appropriateness of the units prescribed in the curriculum | N | 7 | 18 | 12 | 1 | 0 | 38 |
| | | % | 18.42 | 47.36 | 31.57 | 2.63 | 0 | |
| Q5 | Regular updation of Syllabus to meet the demand of the students | N | 10 | 16 | 8 | 2 | 2 | 38 |
| | | % | 26.31 | 42.10 | 21.05 | 5.26 | 5.26 | |
| Q6 | Institutional implementation of the curriculum (as per scheduled University Academic Calendar) | N | 12 | 15 | 8 | 3 | 0 | 38 |
| | | % | 31.57 | 39.47 | 21.05 | 7.89 | 0 | |
| | Institution provides adequate lab and library facility | N | 21 | 10 | 5 | 2 | 0 | 38 |

| | | | | | | | | |
|------------|---|----------|--------------|--------------|--------------|-------------|-------------|-----------|
| Q7 | | % | 55.26 | 26.31 | 13.15 | 5.26 | 0 | |
| Q8 | Institution provides ample time for co-curricular experiences | N | 19 | 11 | 4 | 3 | 0 | 37 |
| | | % | 51.35 | 29.72 | 10.81 | 8.10 | 0 | |
| Q9 | Conduct of tests and Internal exam for effective learning] | N | 11 | 16 | 8 | 3 | 0 | 38 |
| | | % | 28.94 | 42.10 | 21.05 | 8.10 | 0 | |
| Q10 | Institution provides motivation for higher education and Life lessons] | N | 20 | 12 | 3 | 3 | 0 | 38 |
| | | % | 52.63 | 31.57 | 8.10 | 8.10 | 0 | |
| Q11 | Institution provides best possible way using ICT and other resources | N | 13 | 16 | 6 | 2 | 1 | 38 |
| | | % | 34.21 | 42.10 | 15.78 | 5.26 | 2.63 | |

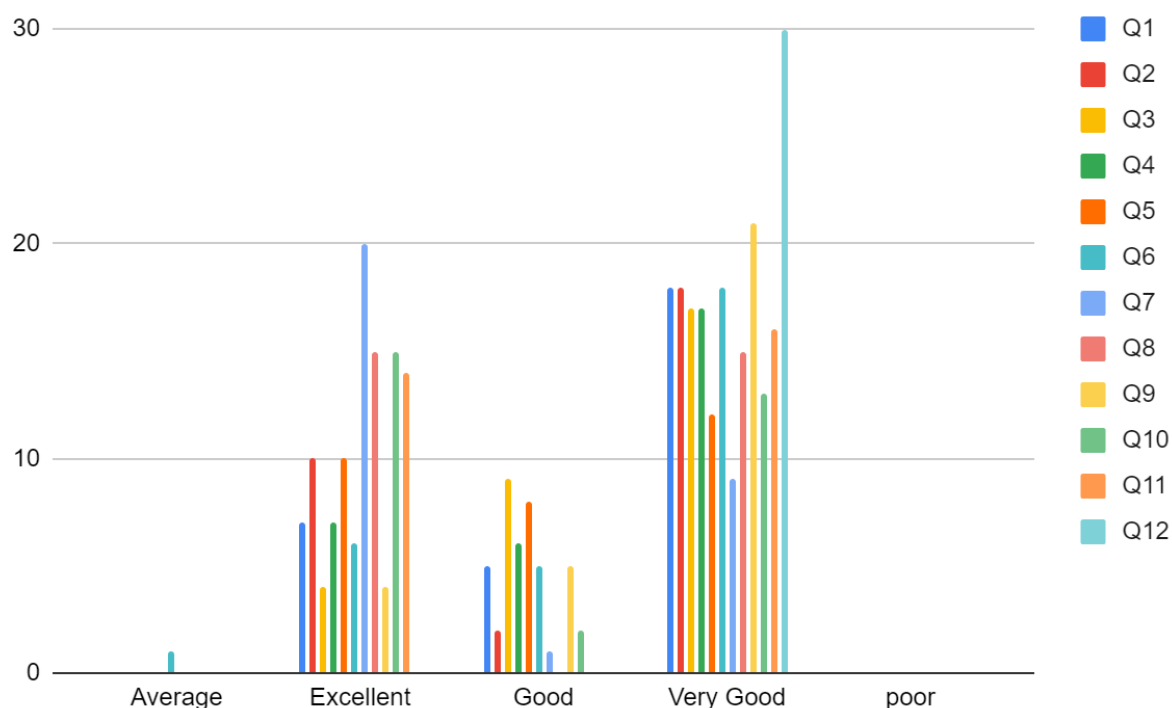
Students Suggestions & Observations to improve the overall quality of the curriculum

Inference: Students suggested certain modifications. Students are satisfied to a great extent with the curriculum but they suggested that implementation of job oriented classes.

FEEDBACK REPORT (2021-2022) ENGLISH

| SL. NO | Questions | Excellent | Very Good | Good | Average | Poor |
|--------|--|-----------|-----------|------|---------|------|
| 1 | The curriculum enhances the competencies of the students | 23% | 60% | 16% | 0 | |
| 2 | Syllabus and teaching methods | 33% | 60% | 6% | 0 | |
| 3 | The choice of electives (open) provides for employability skills& soft skills. | 13% | 57% | 30% | 0 | |
| 4 | Relevance and Appropriateness of the units prescribed in the curriculum | 23% | 57% | 26% | 0 | |
| 5 | Regular updation of Syllabus to meet the demand of the students | 33% | 40% | 16% | 0 | |
| 6 | Institutional implementation of the curriculum (as per scheduled University Academic Calendar) | 20% | 60% | 3% | 3% | |
| 7 | Institution provides adequate lab and library facility | 66% | 30 | 0 | 0 | |
| 8 | Availability of Teachers for student consultation | 50% | 50% | 16% | 0 | |

| | | | | | | |
|----|--|-----|-----|----|---|--|
| 9 | Institution provides ample time for co-curricular experiences | 13% | 70% | 6% | 0 | |
| 10 | Conduct of tests and Internal exam for effective learning | 50% | 43% | 0 | 0 | |
| 11 | Institution provides motivation for higher education and Life lessons | 47% | 53% | 0 | 0 | |
| 12 | Institution provides best possible way using ICT and other resources | 0 | 0 | 0 | 0 | |

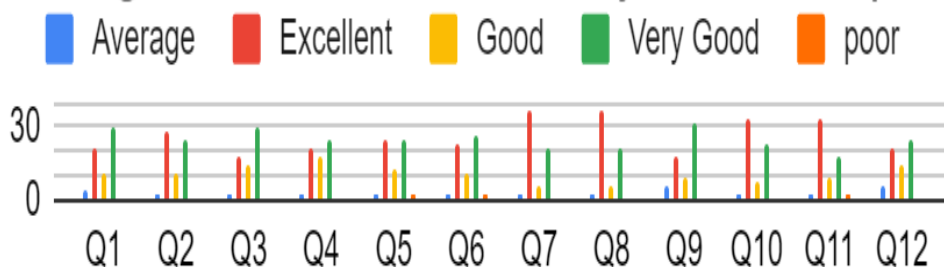


Provide a better class room for common classes. Weekly or monthly class tests, revision notes, revision classes will help the students to improve their knowledge. Add more opportunities to showcase the skills, talents and extra curricular activities for students because each student has different talents . Don't judge the students based on some question papers or academics. And also provide career guidance classes for their better future. These also improve the dignity of the college too. Because we get a better outcome from our students.

Taking the suggestions from students side will improve the reputation of the college.

FEEDBACK REPORT (2021-2022) MATHEMATICS


Average, Excellent, Good, Very Good and p...



Students Suggestions & Observations to improve the overall quality of the curriculum

Inference: Students suggested certain modifications. Students are satisfied to a great extent with the curriculum but they suggested that implementation of job oriented classes.

As per the collected responses of the year 2021-22, Almost all students are satisfied with the curriculum, in its diverse aspects: curricular objectives in enhancing their competencies , teaching methods adopted, the choice of electives & open courses, relevance of units in the curriculum, transparency of allocating credits to the courses etc. The students shared mixed opinion that updation of Syllabus meet their demand ,the size of the syllabus in terms of load on them as well balanced & integrated. The students are satisfied with current evaluation scheme as good and proper. The institutional implementation of the curriculum and ambiance of the institution as excellent a few believes that there is still room for improvement .


Dr. DOMINIC THOMAS
 Principal
 S.E.S. COLLEGE
 SREEKANDAPURAM